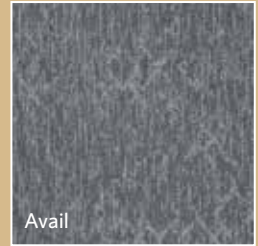


MANAAKI

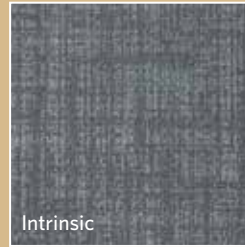
Myriad / Avail / Intrinsic / Kindred



Myriad



Avail



Intrinsic



Kindred



Ontera
A MILLIKEN COMPANY



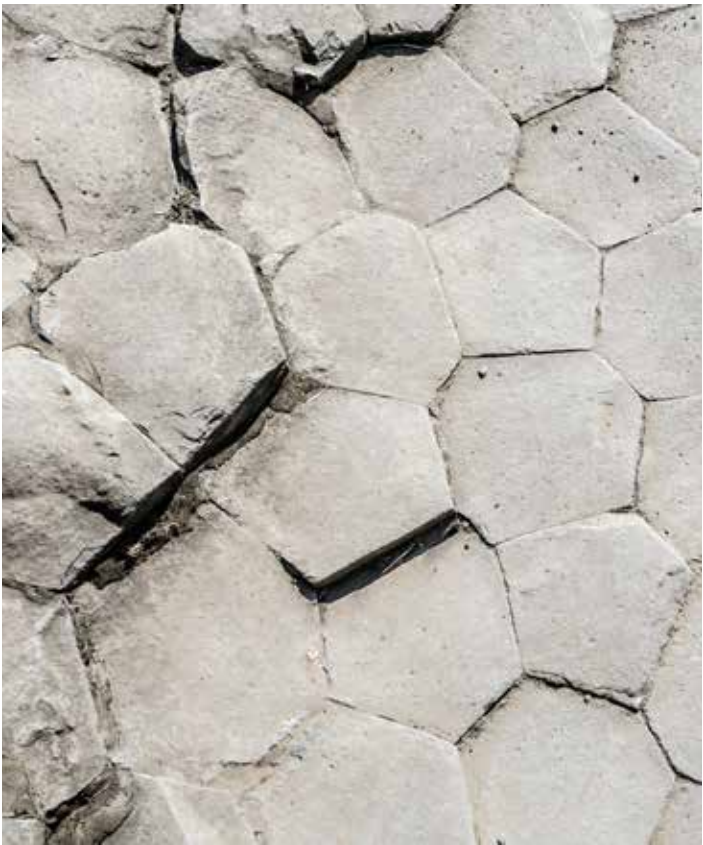
INSPIRED. INSPIRING.

"Manaaki" is a Maori word meaning to support, take care of, give hospitality to, protect, show respect and care for others.

The Manaaki collection is inspired by nature's nurturing instincts and the people who so generously give care and support for the infirm or aged members of our community. A warm, homely feel delivered by elegant organic tones and seamless textures. Subtle contrasts and sophisticated patterning provide a functional yet calming balance – designed to contribute comfort and support for a soothing environment.



Myraid in Shale, MYR153-5



Kindred

A rich contrasting pattern - like a naturally weathered landscape bursting with an enthralling story to tell.



KIN153-5 SHALE



KIN121 PUMICE



KIN44 RHYOLITE



KIN47 SCORIA



KIN108-122 LIMESTONE



KIN13-108 SLATE



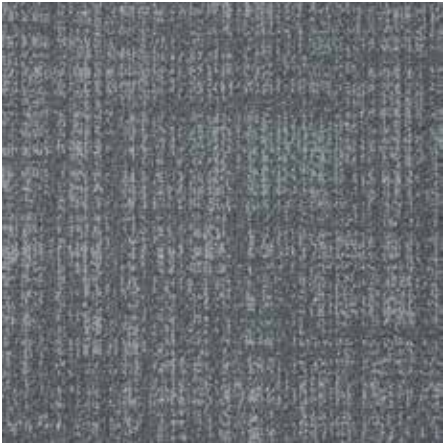
Kindred in Shale, KIN153-5



Kindred in Scoria, KIN47

Intrinsic

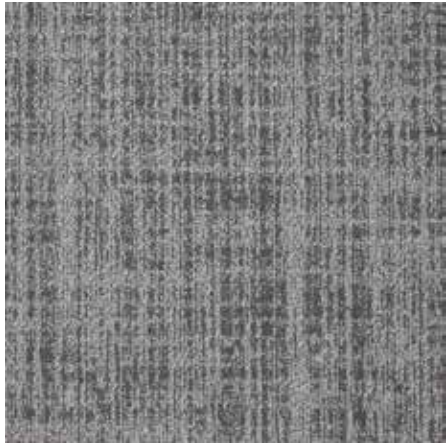
Subtle, soothing, structural and strong. The Intrinsic cross hatch design represents the supporting and nurturing powers of nature.



INT153-5 SHALE



INT121 PUMICE



INT44 RHYOLITE



INT47 SCORIA



INT108-122 LIMESTONE



INT13-108 SLATE

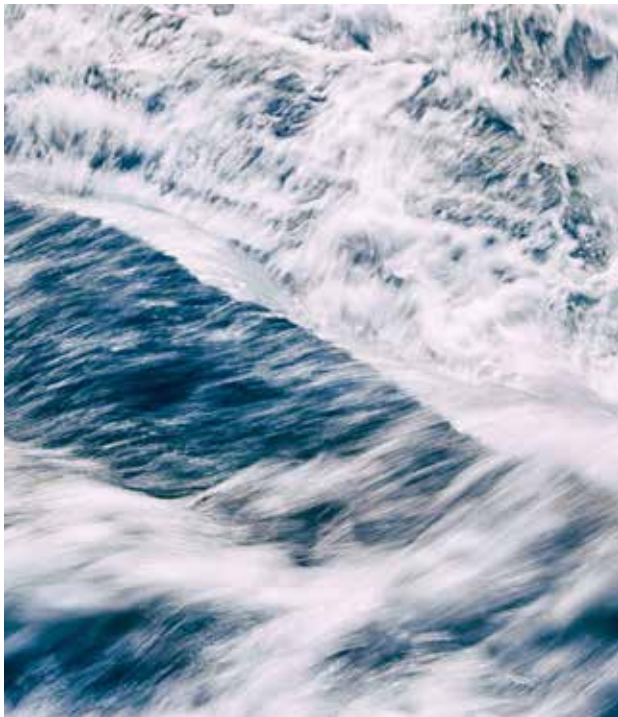


Intrinsic in Pumice, INT121



Myriad

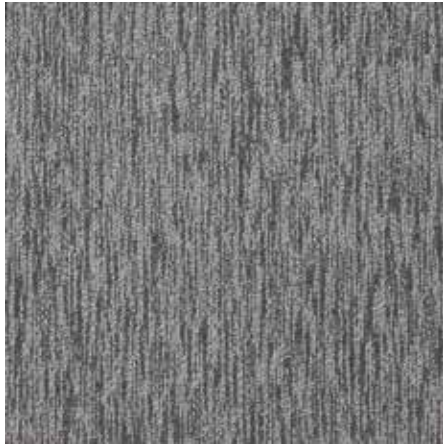
A graceful linear design inspired by calming streams meandering through the countryside.



MYR153-5 SHALE



MYR121 PUMICE



MYR44 RHYOLITE



MYR47 SCORIA



MYR108-122 LIMESTONE



MYR13-108 SLATE



Myriad in Shale, MYR153-5



Myriad in Rhyolite, MYR44

Avail

Soft organic patterns expressing instinctive comfort.
A new perspective with an elegant visual landscape
for the floor.



AVA153-5 SHALE



AVA121 PUMICE



AVA44 RHYOLITE



AVA47 SCORIA



AVA108-122 LIMESTONE



AVA13-108 SLATE



Avail in Limestone, AVA108-122



Avail in Scoria, AVA47

Maxima Backing

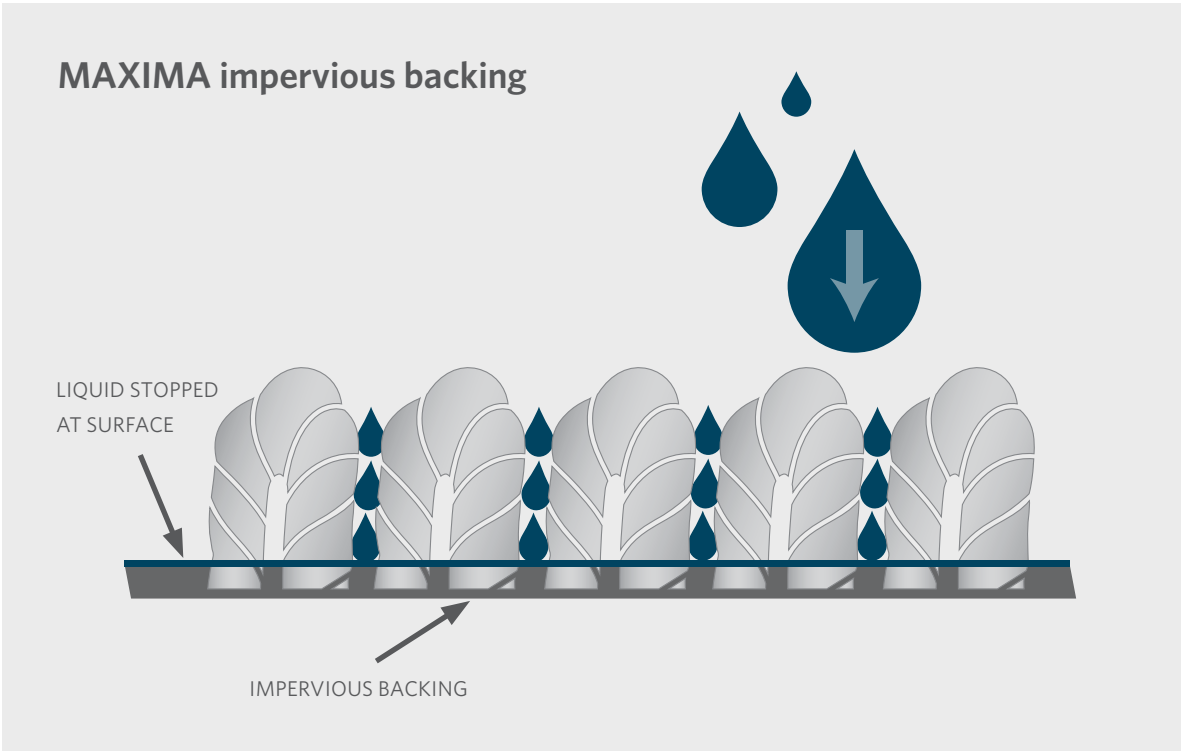
Manaaki carpet is manufactured with the revolutionary MAXIMA Backing System. Designed and developed by Milliken specifically for carpet in roll format, MAXIMA is a world leading polyolefin backing system delivering maximum performance for all project installations.



- Maximum impermeability
- Maximum environmental responsibility
- Maximum health and wellness

Plus the light weight and flexible properties of the MAXIMA Backing System make life easier for installers when manoeuvring and laying the rolls on site.

The MAXIMA impervious backing ensures Manaaki carpet rolls are perfectly suitable to handle the demands of health and aged care environments.



Technically Superior Performance

Manaaki carpet achieves technically superior performance via:

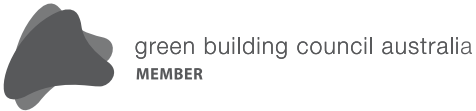
- Aquafil® Econyl yarn with 100% recycled content
- 100% recyclable
- 18% recycled content
- Impervious polyolefin backing, PVC-free
- Push pull force test - independently certified and passed for use with wheeled equipment
- Flammability rating - exceeds industry standards
- VOC rating - exceeds industry standards
- Thermal Resistance (R Value) - exceeds industry standards.



For complete technical specifications refer to www.ontera.com.au

Environmental Leadership

Ontera has an unwavering commitment to environmental leadership across all aspects of our business. As a member of the Milliken family of companies, our environmental stewardship is world class but also continually evolving as we pioneer new techniques in manufacturing, wellness and sustainability. Our products exceed stringent environmental, health and quality standards which consequently enable compliance with world leading environmental certifications.





INDEX - FOLD OUT

COLOURLINE

Kindred



KIN153-5 SHALE



KIN121 PUMICE



KIN44 RHYOLITE



KIN47 SCORIA



KIN108-122 LIMESTONE



KIN13-108 SLATE



KIN153-5 SHALE - PATTERN REPEAT 226CM

COLOURLINE

Intrinsic

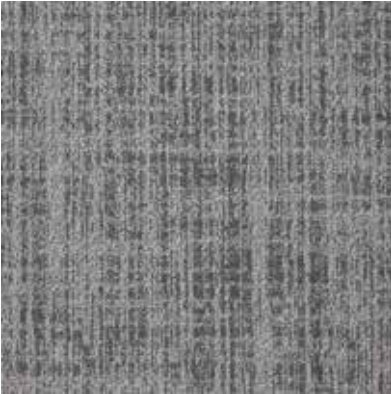


INT153-5 SHALE

● STOCKED ITEM



INT121 PUMICE



INT44 RHYOLITE



INT47 SCORIA



INT108-122 LIMESTONE



INT13-108 SLATE



INT153-5 SHALE - PATTERN REPEAT 181CM

COLOURLINE

Myriad



MYR153-5 SHALE



MYR121 PUMICE



MYR44 RHYOLITE



MYR47 SCORIA



MYR108-122 LIMESTONE



MYR13-108 SLATE



MYR153-5 SHALE - PATTERN REPEAT 235CM

COLOURLINE

Avail



AVA153-5 SHALE



AVA121 PUMICE



AVA44 RHYOLITE



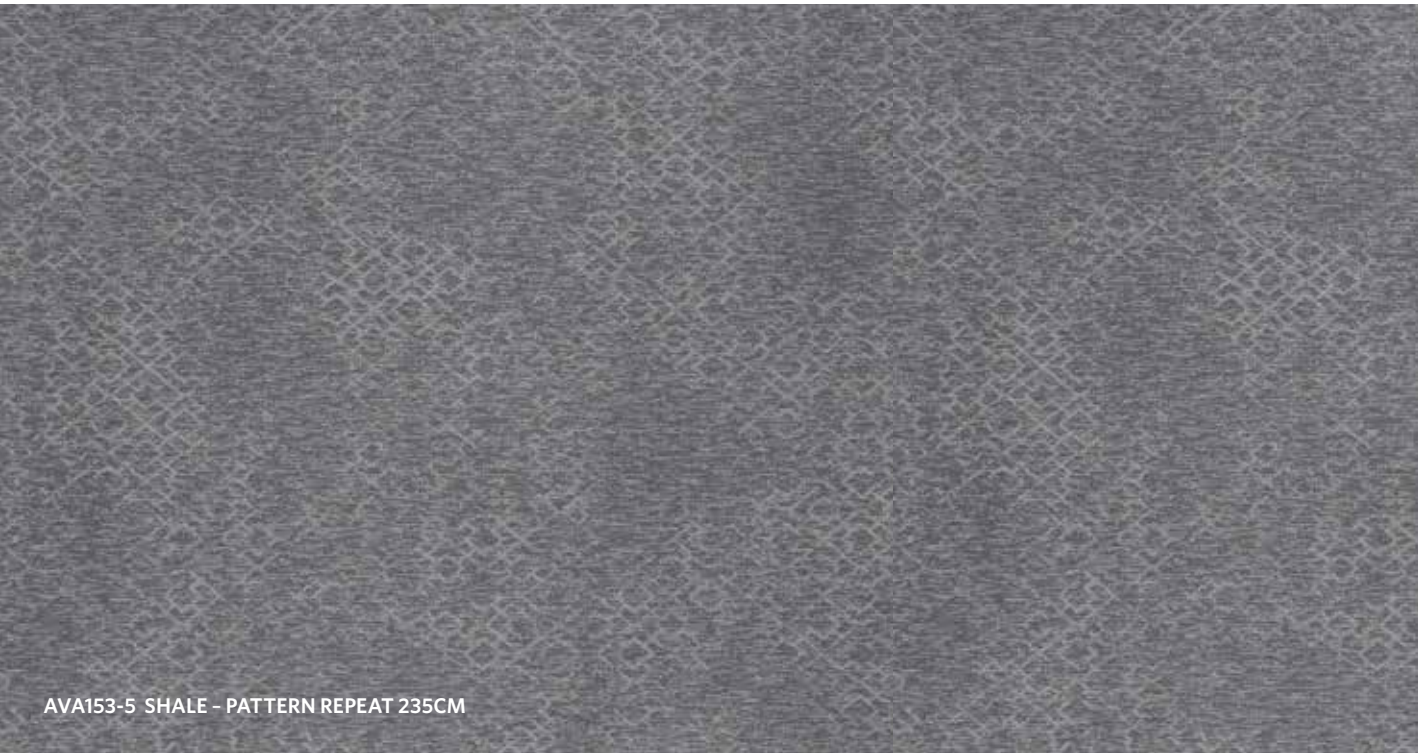
AVA47 SCORIA



AVA108-122 LIMESTONE



AVA13-108 SLATE



AVA153-5 SHALE - PATTERN REPEAT 235CM

MANAAKI

SPECIFICATION

Construction

Tufted, Textured Loop

Standard Roll Size

2 m x 10 m

Dye Method

Solution Dyed

Pattern Repeat

Myriad: 235cm

Avail: 235cm

Intrinsic: 181cm

Kindred: 226cm

Face Fiber

Aquafil® Econyl

Solution-Dyed Nylon Type 6

Tufted Face Weight

18 oz/yd²

Gauge

1/12

Backing

Maxima Hard Back

Nominal Total Thickness

6.88 mm avg.

Nominal Total Weight

3323 g/m²

Texture Appearance

Retention Rating (TARR)

Heavy

Indoor Air Quality

Pass (ISO10580:2010.)

Warranties

15 Year Product Warranty

Flammability

Radiant Panel Test:

CRF = 7.3kWm²; Smoke = 85%. Mins

Recycled Content

Manaaki uses Aquafil® yarn with 100% recycled content, made from a minimum of 50% post-consumer and 50% post-industrial content. The total recycled content of Manaaki is 18%.

ECONYL®
Made with 100% Regenerated Nylon

Installation Method



BROADLOOM



Declare.



green building council australia
MEMBER

MEMBER



Ontera
A MILLIKEN COMPANY

Australia

Toll Free: 1800 668372

New Zealand

Toll Free: 0800 668372



Growing greener for over 100 years.
Visit milliken.com for more information.