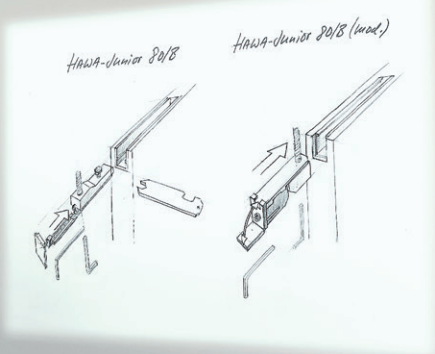


New



Innovative technology for optimized installation and adjustment

HAWA-Junior 80/B (mod.)



Patent pending

New suspension, new track stop:

Installing wood sliding doors weighing up to 80 kg was never easier.

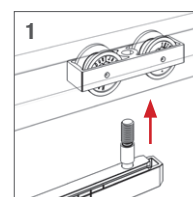
HAWA-Junior 80/B (mod.)



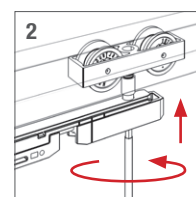
The next chapter of a success story: HAWA-Junior 80/B (mod.). It combines technology tried and tested millionfold with newly developed components to set new standards in the ease of installation. With no detrimental effect on the qualities that have made the HAWA-Junior a global best-seller among sliding door hardware systems.

About the product

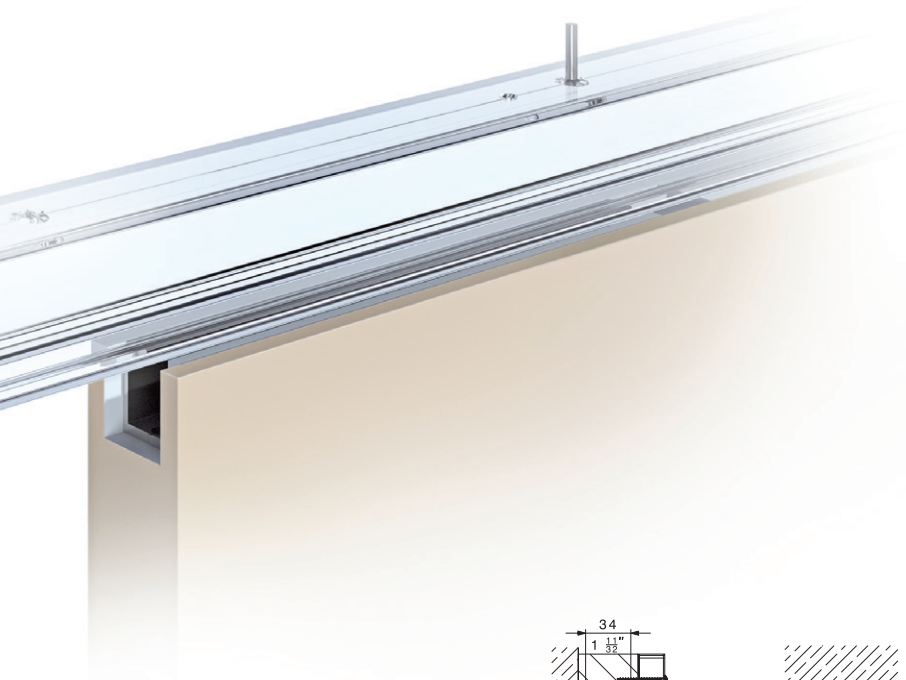
The most important modification to the HAWA-Junior 80/B (mod.) concerns the suspension plate that enables a minimum installation height. Forget about lock nut and assembly wedge – they are already integrated – and instead look forward to innovative installation in the suspension profile. The modifications also include optimized adjustment options for equalizing structural tolerances and an integrated, elegant metal cover flap that serves as a handle for pulling out the suspension trolley and doubles up as a locking mechanism. Last but not least, the redesigned track stop with a seamlessly adjustable retention force allow to make your work with HAWA-Junior 80 systems so much easier.



Let's go



install



Technical specifications

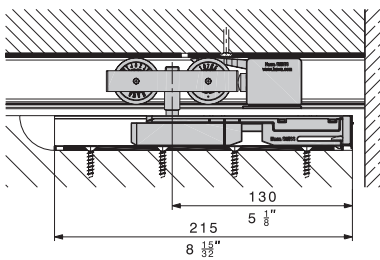
Max. door weight 80 kg (176 lbs.)

Overall height adjustment $\pm 7 \text{ mm}$ ($\frac{9}{32}''$)

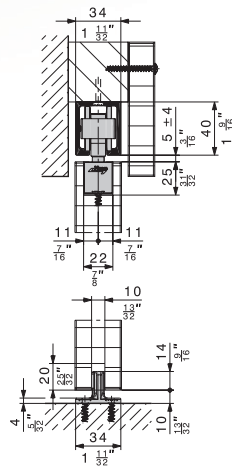
Coarse adjustment $\pm 3 \text{ mm}$ ($\frac{1}{8}''$)

Fine adjustment $\pm 4 \text{ mm}$ ($\frac{5}{32}''$)

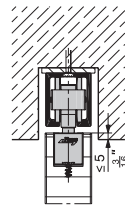
Minimum installation height 1 mm ($\frac{1}{16}''$)



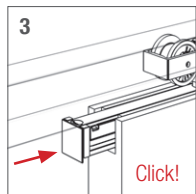
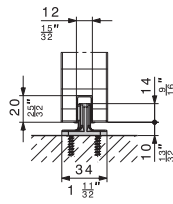
Newly developed components:
Track stop and suspension plate.



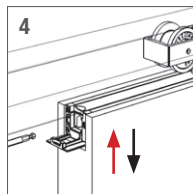
Ceiling installation with cover, provided by others.



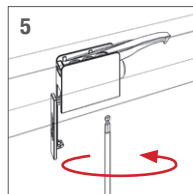
Recessed ceiling installation.



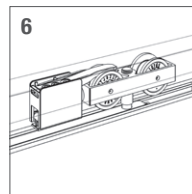
slide in



open flap and adjust



open track stop, lock and adjust



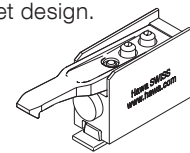
done.

At a glance

- High-quality sliding technology, outstandingly smooth operation, proven millionfold.
- New suspension plate with optimized fine adjustment and integrated cover flap.
- Minimum installation height: only around 1 mm gap between top track and sliding door.
- Height adjustable from the leading edge without extracting the suspension.
- Both door edges must be accessible at all times for assembly.
- SoftMove 80 soft closing mechanism for HAWA-Junior 80 for gently decelerating and closing doors.

New track stop for all HAWA-Junior 80 systems

With optimized retainer adjustment, integrated technology and a dark cover flap in a discreet design.



Available from specialist dealers

Further information:

Hawa AG
8932 Mettmenstetten
Switzerland
Tel. +41 44 767 91 91
Fax +41 44 767 91 78
www.hawa.ch

