

# StepRight® Modular Matting



The intelligent design combination of protruding finger like rubber nodules and carpet insert, make StepRight® Modular extremely hard wearing and effective, removing dirt and water from footwear when approaching from all directions.

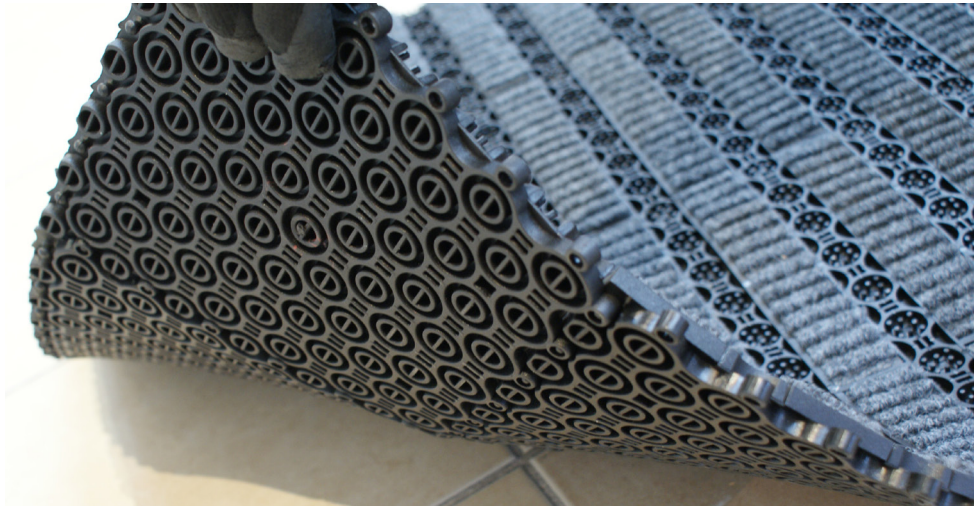
StepRight® Modular is the smart new entrance matting from CTA, designed with multiple 200x200mm modules manufactured from heavy duty plastic. StepRight® Modular is available in two profiles, a Carpet and Edge Module. The Edge Module has been designed to allow precise sizing of the installation without having to cut through a Carpet Module. It also frames the mat for overall aesthetics.

Available with Black, Grey, Red, Ocean blue and Pearly Green Carpet inlay. StepRight® Modular is also stiletto and wheel chair friendly and complies with AS1428.

## KEY FEATURES

- Modules can be easily replaced if required
- Heel proof construction to prevent heels from being trapped
- 200mm x 200mm modules to fit almost any location
- Carpet inlays are available in 5 attractive colours
- Suits recess depths of 12 to 16mm
- Reducing strip is also available for surface mounted options.





## MATERIAL

Manufactured from heavy duty plastic for the highest possible level of wear resistance.

## APPLICATIONS

- At entry points to buildings, to remove moisture and grit

## DIMENSIONS

Standard 200mm x 200mm modules, 16mm thick. 2 sqm per box.

## INSTALLATION METHOD

Check the mat recess subfloor is level, sound and clean. Click modules together and cut edge modules to size if required. If used in a heavy traffic area - it may be necessary to secure the installation with positioning screws to reduce movement during service.

## COLOURS

RED
OCEAN BLUE
GREY
BLACK
GREEN

## COMPLIANCE

All CTA products conform with the requirements of the Australian standards and are tested by a NATA certified laboratory. Please consult with CTA for relevant test reports:

- AS1428:2009 Design for access and mobility
- AS4586:2013 Slip resistance classifications for new pedestrian surface materials
- NCC - National Construction Codes

## LUMINANCE CONTRAST

Please view the CTA Luminance Brochure for details or contact your CTA representative to discuss or request an onsite luminosity test.

## WARRANTY

CTA provides a comprehensive warranty, in accordance with our published warranty statement which can be viewed on [www.ctagroup.com.au](http://www.ctagroup.com.au)

## CTA COMPLETE CARE MAINTENANCE

Asset owners have a Duty of Care responsibility to maintain access product within design performance parameters. CTA offers a fully integrated maintenance program which includes regular scheduled maintenance and replacement of worn components where necessary. Please contact your CTA representative for information on our "Complete Care Program."

## CTA INSTALLERS

CTA's accredited installers are available to do the installation work for you - with short turnaround times and guaranteed workmanship. Our installation team is the largest and most experienced in the nation, so you can rest assured you are in safe hands.

## MORE INFORMATION

Product Installation, list of Approved Products and Material Safety Data Sheets are available on request.

**CALL CTA ON 1300 282 282**  
TO ARRANGE A MEETING WITH A SALES CONSULTANT

VICTORIA | NEW SOUTH WALES | QUEENSLAND | WESTERN AUSTRALIA

**CTA**   
[WWW.CTAGROUP.COM.AU](http://WWW.CTAGROUP.COM.AU)