



HiLight® FourBar



CTAs HiLight® FourBar range of ribbed safety stair edging combines premium performance and aesthetics with maximum flexibility. Designed for high traffic situations, this range will add flair to any public area where style choices are important.

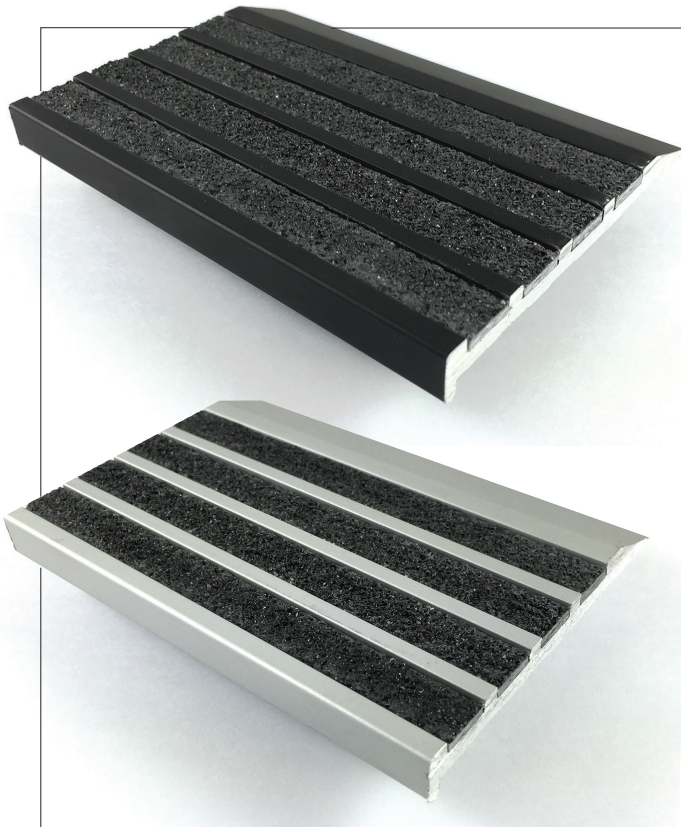
HiLight® FourBar incorporates an elegant rib profile and the narrow inserts can be selected in any combination of black, safety yellow or grey to suit your design and safety requirements.

HiLight® FourBar has also been designed for maximum ease of installation. All extrusions are pre-cut to order. They are supplied pre-drilled and with all the necessary fixing screws and star plugs for installation on to any hard surface or direct stick carpet application.

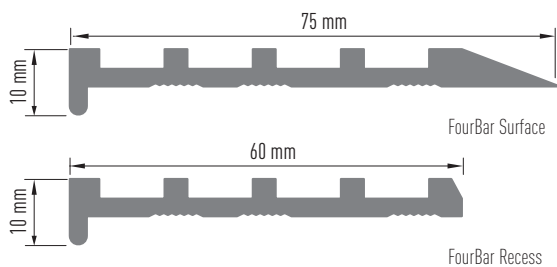
HiLight® FourBar is supplied with three of the narrow anti-slip rib inserts attached. The remaining rib includes a pressure sensitive adhesive (PSA) backing, which is applied only after the fastenings.

KEY FEATURES

- Highest aesthetic appeal and choice of colours
- Designed for high traffic situations
- P5 rated carborundum strip inserts for maximum safety
- Concealed fixtures minimises any likelihood of vandalism
- Hard anodised extrusion provides extreme endurance
- Conforms to all aspects of the relevant safety and public access standards.
- Available in both natural silver and anodised black.



HILIGHT® FOURBAR PROFILE



PRODUCT OPTIONS

MODEL	COLOUR	PRODUCT CODE
FourBar Surface	Natural Silver	UM020A-SNCI-XXX
	Black	UM021A-SNCI-XXX
FourBar Recess	Natural Silver	UM022A-SNCI-XXX
	Black	UM023A-SNCI-XXX

Where XXX = insert colour (see below)

HILIGHT® SAFETY INSERT SYSTEM

The HiLight® family of safety stair edging utilises a common insert system. Comprised of a 10mm wide Carborundum P5 rated insert in three colours, these inserts offer the specifier the ability to mix colours to create the desired effect. Please contact CTA for product images and to request a sample in the colours of your choice.

	Carb
AS 4586 Rating	P5
Material	Carborundum
Colours	Yellow / Grey / Black
Warranty / Life Expectancy	5 Years / 10+ years

HiLight® FourBar

KEY FEATURES

- Designed for high traffic situations
- P5 rated carborundum strip inserts for maximum safety
- Concealed fixtures minimises any likelihood of vandalism
- Conforms to all aspects of the relevant standards
- Available in both natural silver and anodised black

FIVE YEAR
MANUFACTURERS WARRANTY

P5
SLIP RESISTANCE FOR MAXIMUM SAFETY

NCC
COMPLIANT

VANDAL PROOF
INSTALL SYSTEM

HEAVY DUTY
TEMPERED ALUMINIUM EXTRUSIONS

APPLICATIONS

HiLight® FourBar is ideal for retrofitting and new builds. This is a very high performing product, displaying outstanding durability in any internal or external application such as railway stations and egress stairways.

MATERIAL

Manufactured from heavy duty tempered aluminium extrusions.

DIMENSIONS

10mm face. Surface mount 75 mm wide. Four 10mm wide safety tread inserts. Supplied to length up to 3.6m.

INSTALLATION

Supplied to length, pre-drilled with screws. Three inserts attached, the fourth supplied with PSA backing to be applied after fastening.

COMPLIANCE

All CTA products conform with the requirements of the Australian standards and are tested by NATA certified labs.

Please consult with CTA for relevant test reports:

- AS1428:2009 Design for access and mobility
- AS4586:2013 Slip resistance classifications for new pedestrian surface materials
- NCC - National Construction Codes

LUMINANCE CONTRAST

Please view the CTA Luminance Brochure for details or contact your CTA representative to discuss or request an onsite luminosity test.

WARRANTY

CTA provides a comprehensive warranty, in accordance with our published warranty statement which can be viewed on cobbletac.com.

CTA COMPLETE CARE MAINTENANCE

Asset owners have a Duty of Care responsibility to maintain access product within design performance parameters. CTA offers a fully integrated maintenance program which includes regular scheduled maintenance and replacement of worn components where necessary. Please contact your CTA representative for information on our "Complete Care Program."

CALL CTA ON 1300 282 282 TO ARRANGE A MEETING WITH A SALES CONSULTANT

VICTORIA 1300 282 282 NEW SOUTH WALES 1300 282 679 QUEENSLAND 1300 282 753 WA 1300 282 282

